

HPC

All the right moves.

The HPC's smooth-running end trucks with durable structural steel frames and ductile iron wheels give you the freedom to safely move your load where you need it. The end trucks can also be easily installed above or below the beam applications to give you room to accommodate most existing crane systems.

Easily Configurable

Fully machined structural steel frames on HPC convertible push end trucks can be assembled for either top-running or light- to medium-duty underhung applications.

Standard Safety Features

For added safety, HPC end trucks come standard with drop stops and rail sweeps for continued safety along the beam. Rubber bumpers are designed to prevent travel off the end of the beam.

Quick All-Bolt Assembly

For quick and easy assembly, HPC end trucks are engineered with bolts. All-bolt construction lets you configure your end trucks for your specific requirements.



HPC

CAPACITY

- ½ to 2 metric tonnes

STANDARDS

- Drop stops and rail sweeps come standard

OPTIONS

- Longer or shorter end truck lengths are available

BODY

- Frames are fabricated from structural steel for optimal strength and rigidity

WHEELS

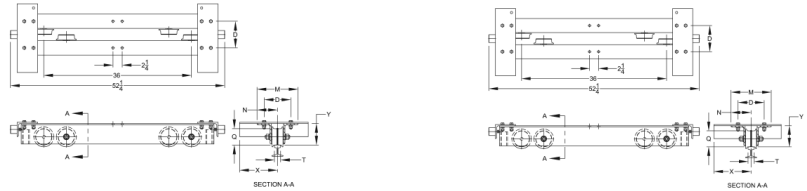
- Precision machined cast iron designed to roll smoothly on either flat or tapered flanges

OPERATION

- Convertible for either top running or underhung for light to medium duty applications

HARDWARE

- Bolted for ease of assembly



DIMENSIONS

Capacity (tonne)	Model	T*		Overall length	D**	M**	N	Q	X	Y
		Top Running	Underhang							
½	HPC505	1.5 - 6	3 - 6	52.25	T + 4.75	T + 7.3	M / 2	3.12	10.2 - T/2	4.3
1	HPC510	1.5 - 6	3 - 6	52.25	T + 4.75	T + 8.3	M / 2	4.00	10.2 - T/2	5.3
2	HPC520	1.5 - 6	3.3 - 6	52.25	T + 4.75	T + 8.3	M / 2	4.88	10.2 - T/2	5.9

SPECIFICATIONS

Capacity (tonne)	Model	Max Span (ft)	Wheel Diameter (in)	(T) Flange Range		End Truck Weight (lbs/pr)
				Top Running	Underhang	
½	HPC505	24	3.12	1.5 - 6	3 - 6	156
1	HPC510	24	4.00	1.5 - 6	3 - 6	214
2	HPC520	24	4.88	1.5 - 6	3.3 - 6	270